

MASINI IN CONSTRUCTIE LIBERA DE FOARTE INALTA EFICINTA MASINI DE SPALAT

**FX
GAMA**

FX65	FX80	FX105	FX135
6,5KG 13 LIVRE	7,5KG 18 LIVRE	10,5KG 24 LIVRE	13,5KG 31 LIVRE



CARACTERISTICI

Constructie libera, stoarcere la turatie inalta (pana la 1165 RPM - FX65,80)
Panou superior din otel si panourile frontal si laterale de culoare gri antracit
Tambur si cuva din otel inoxidabil
Microprocesor usor de utilizat de tip Xcontrol
Dozator de detergent patentat
Valva de evacuare mare (Ø 76 mm)
Acces usor din fata la toate componentele importante
Deschidere mare a usii pentru incarcare si descarcare usoara a rufelor

OPTIUNI

Microprocesor Xcontrol Plus - complet programabil
Programator de timp ce functioneaza cu monede (CPS)
Panouri frontal si laterale din otel inoxidabil
Prize USB si RS485 (pe panoul din spate)
Racorduri pentru detergent lichid - Easy Soap
Pompe pentru detergent lichid
Kit de recuperare a apei
Versiune cu incalzire cu abur
Pompa pentru evacuarea apei (FX65, 80)
A treia intrare (racord) pentru apa



CONSTRUCTIE
ERGONOMICA



DESCHIDERE
LARGA A USII



CONSUM REDUS
DE APA SI ENERGIE

cascade
drum

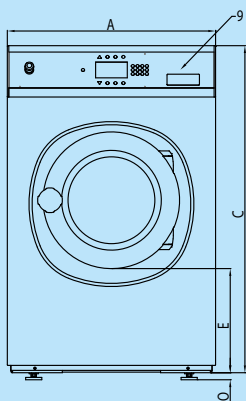
TRACE-TECH

XCONTROL

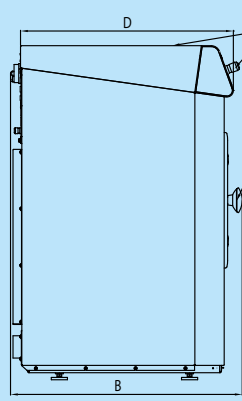
supereco
washing programmes

GET AHEAD IN LAUNDRY

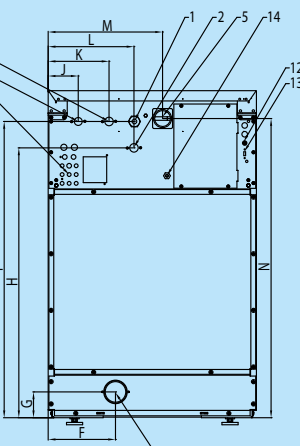
TIP MASINA		FX65	FX80	FX105	FX135
TAMBUR INTERIOR					
Capacitatea maxima 1:9	kg (lb)	7 (15)	9 (20)	12 (26)	15 (33)
Capacitate 1:10	kg (lb)	6,5 (13)	7,5 (18)	10,5 (24)	13,5 (31)
Volum	litri	65	75	105	135
Diametru	mm	530	530	620	620
TURATIE TAMBUR					
Spalare	rpm	49	49	49	49
Storcere	rpm	1165	1165	1075	1075
FACTORUL G					
INCALZIRE					
Electrica (standard)	kW	6 / 9	6 / 9	6 / 9 / 12	9 / 12
Abur	bar	1 - 8	1 - 8	1 - 8	1 - 8
Apa fierbinte	°C	90	90	90	90
Nivel de zgomot	dB (A)	< 65	< 65	< 65	< 65
Racord valve admisie apa	BSP	3/4"	3/4"	3/4"	3/4"
Presiune apa	kPa	100-800	100-800	100-800	100-800
Presiune recomandata apa	kPa	300-500	300-500	300-500	300-500
Debit apa la intrare	l/min	20	20	20	20
Racord evacuare apa	ext. Ø mm	76	76	76	76
Debit de apa la valva de evacuare	l/min	210	210	210	210
Racord la valva de abur	BSP	1/2"	1/2"	1/2"	1/2"
Presiune abur	kPa	100-800	100-800	100-800	100-800
DIMENSIUNI					
Dimensiuni HxLxA	mm	1115x710x740	1115x710x790	1225x795x795	1225x795x945
Greutate neta	kg	170	185	210	255
DATE DE TRANSPORT					
Ambalaj HxLxA	mm	1245x750x840	1245x750x840	1345x835x840	1345x835x985
Greutatea bruta	kg	180	200	235	275



Vedere din fata



Vedere din stanga



Vedere din spate

- 1 Racord electric
- 2 Racord apa calda
- 3 Racord apa rece dura
- 4 Racord apa rece dedurizata
- 5 Intrerupator principal
- 6 Racord detergent lichid
- 7 Racord evacuare apa
- 8 Dozator detergent
- 9 Panou de comanda
- 10 Buton de OPRIRE DE SIGURANTA
- 11 Deschidere usa, FX65, FX80: Ø 330mm; FX105, FX135: Ø 410mm
- 12 Sigurante fuzibile
- 13 Port USB
- 14 Racord electric pentru pompele de detergent lichid

DIMENSIUNI

	A	B	C	D	E	F	G	H	I	J	K	L	M	N	O
FX65	710	740	1115	676	349	230	82	914	1004	113	218	293	390	1020	24
FX80	710	790	1115	726	349	230	88	920	1010	113	218	293	390	1020	24
FX105	795	795	1225	761	342	230	88	1030	1120	103	208	293	475	1130	24
FX135	795	945	1225	911	342	230	88	1030	1120	103	208	293	475	1130	24

latime adanc. inalt.

		FX80
Consum de apa	l/kg	6,6
Consum electric	kWh/kg	0,18

* Program Nr. 11



WATCH
THE FX VIDEO

www.bit.ly/videofx



The Primus preserves the right to change the machines and the specification in this leaflet at any time, without prior notice. Details and photographs are only for information and never binding.

www.primuslaundry.com

Primus by Alliance Laundry Systems

